

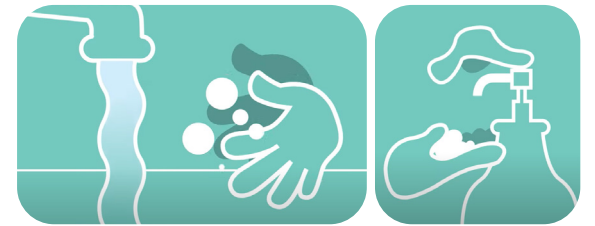
# Face Masks in Schools

## How to wear your mask correctly:

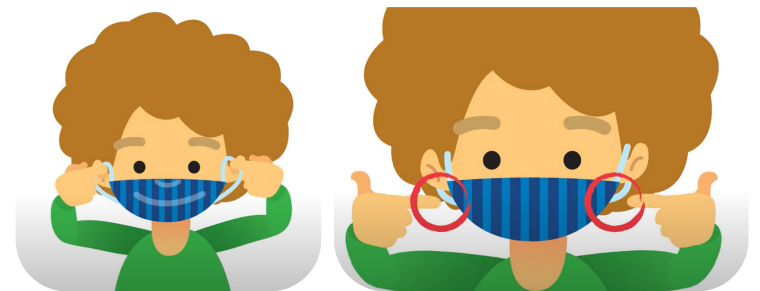
Have a clean bag/container for Clean Masks and a separate bag/container for Used Masks. Make sure to label the bags/containers so you don't get mixed up.



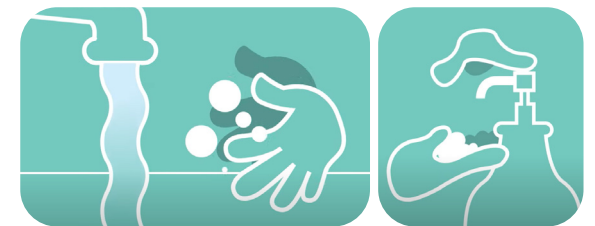
Clean your hands for at least 20 seconds with soap and water and/or alcohol-based hand sanitizer.



Pick up your mask by the loops, cover your nose and mouth and attach it behind your ears. Check your mask to make sure there are no gaps.



Clean your hands for at least 20 seconds with soap and water and/or alcohol-based hand sanitizer again.



When wearing your mask, try to avoid:

- touching your mask or face
- pulling it down around your chin to talk
- hanging your mask around your neck or from one ear

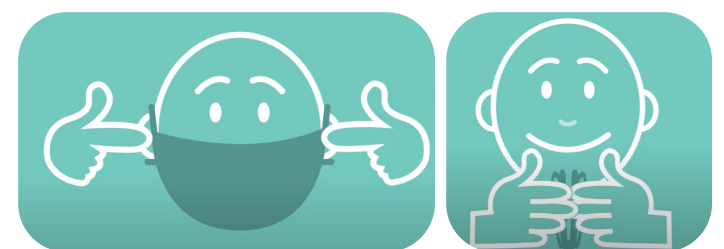


## How to remove your mask correctly:

Clean your hands for at least 20 seconds with soap and water and/or alcohol-based hand sanitizer.



Hold the loops, then fold the mask inward together.



If it is a reusable mask, put it inside the Used Mask bag/container to wash later in hot water. Dry your mask well after washing. Throw away single use masks.



Clean your hands for at least 20 seconds with soap and water and/or alcohol-based hand sanitizer again.

